

This booklet is a visual resource for children and young adults with an autistic condition, sensory or communication disorders.

Venue Story

Welcome to Oxford Playhouse; a theatre for everyone.

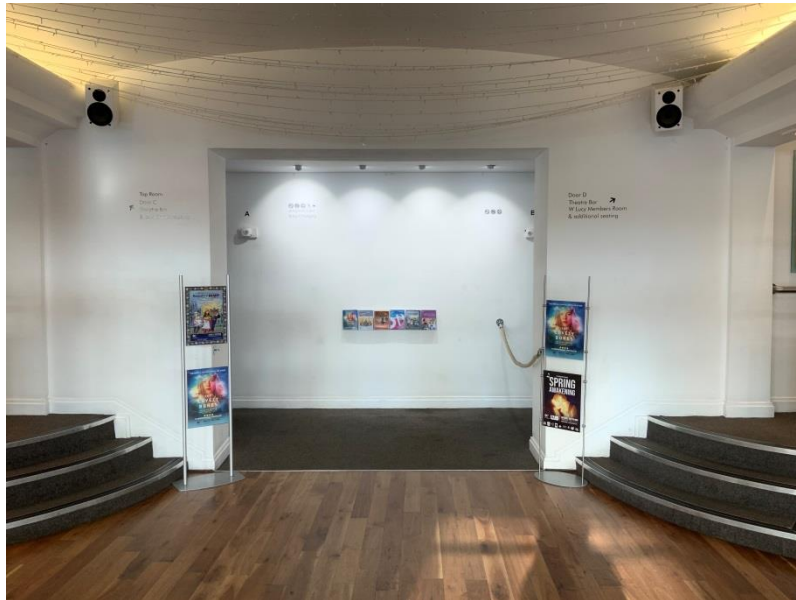
This booklet is to help prepare you for your visit to the theatre.

We are looking forward to welcoming you!

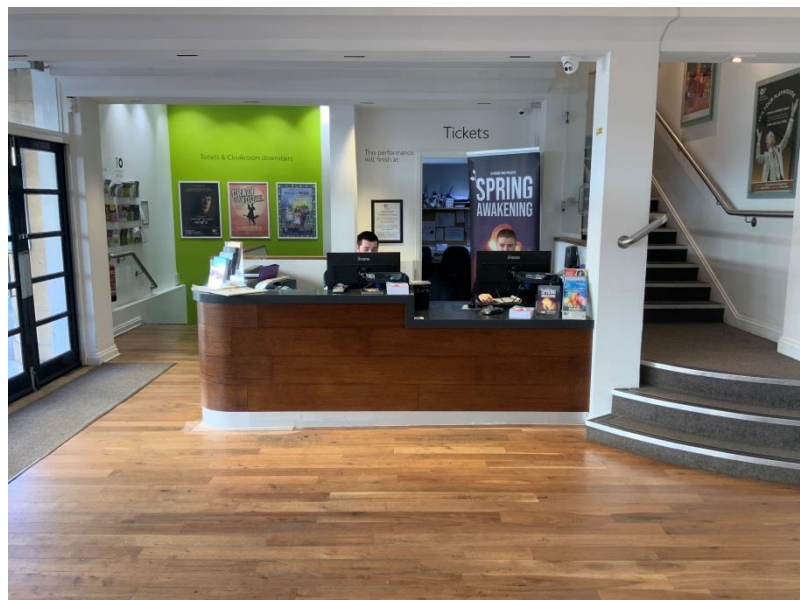
This is what the theatre looks like from the outside.



When you walk through the glass front doors you will be in the main foyer.
This is what it looks like as you walk in.



This is what it looks like if you look to your left.



This is what it looks like if you look to your right.



There are lots of brightly coloured walls and green and blue chairs



On your left you will see the Ticket Office. This is where you can pick up your tickets for the show you are going to see.



You might meet Meg. Meg is one of the people who work in the Ticket Office.



Also in the foyer, you will see the café, where you can buy drinks and snacks.



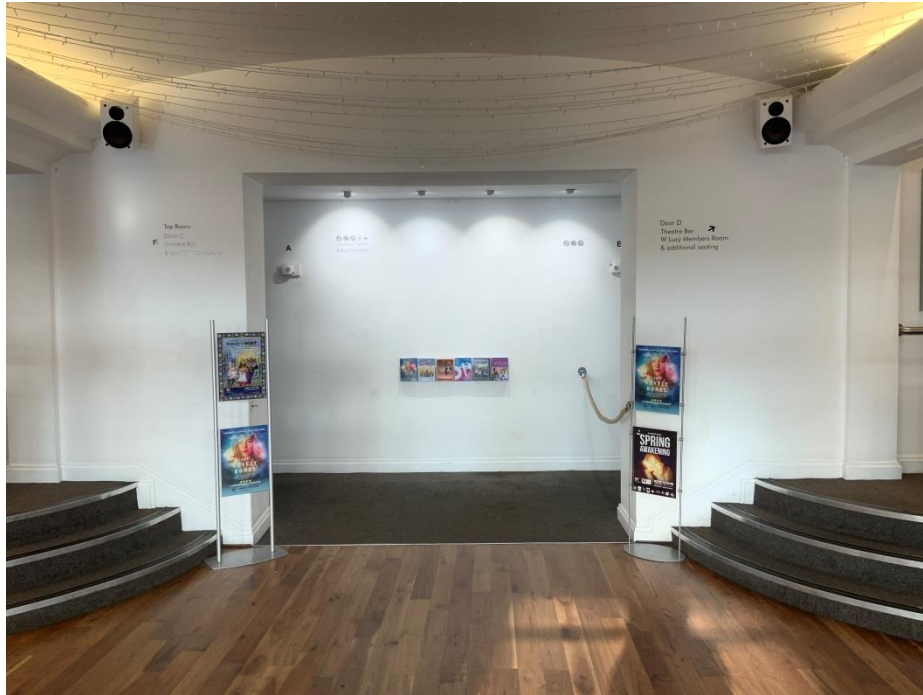
Crisp packets are noisy, so it is better not to eat crisps during the performance, but you could have them in the interval.

If you would like to take some time out during your visit you can go to our relaxed area where you can take it easy and listen to the show through the speakers. There are also some toys and comfy seats.

This is what the relaxed area looks like. It is upstairs in our Circle Bar. You can also go downstairs into the café if you like.



When you are at the theatre you will see lots of ushers wearing black clothes. They are there to help you if you have any questions. They will also ask to see your ticket when you go into the theatre, so that they can help you find your seat.



You can also look out for our Front of House Managers.

They can help you if you have any questions.



They will be dressed in black and their names are Rachel, Claire, Chris and Emma. Rachel is the one on the left in this picture next to Claire, Emma is on the right, and Chris is in the middle.

Thirty minutes before the performance starts you will hear an announcement coming from the speakers saying -*'Ladies and Gentlemen, Boys and Girls, welcome to Oxford Playhouse.'*

The auditorium is now open...'

This means you can go into the theatre if you like.



This is a picture of the auditorium.



The auditorium is a large room with seats upstairs and downstairs, which will be full with lots of other people.

Like everyone else, you will sit in one of these seats to watch the performance. Your ticket will tell you which seat to sit in and the ushers can help you find it.

When the show is ready to start, the big lights will go out very slowly and it will go dark. Some people might still be making a little bit of noise, but this is nothing to be worried about.

The actors will come on to the stage and the show will start.

If you want to leave the auditorium during the play that's OK, the lights will be left on a bit to help you find your way out. When you're ready you can come back and sit down in your seat again.

During the show, you might hear the actors on stage make a joke. You can laugh if you like.



During the show, you might see something that makes you feel sad or upset. That's OK, you can feel that way if you want to.



At the end of the show, everyone will clap their hands to show the actors that they have enjoyed watching the show. On your way out you can write in our comments book and tell us what you thought or send an email to feedback@oxfordplayhouse.com

